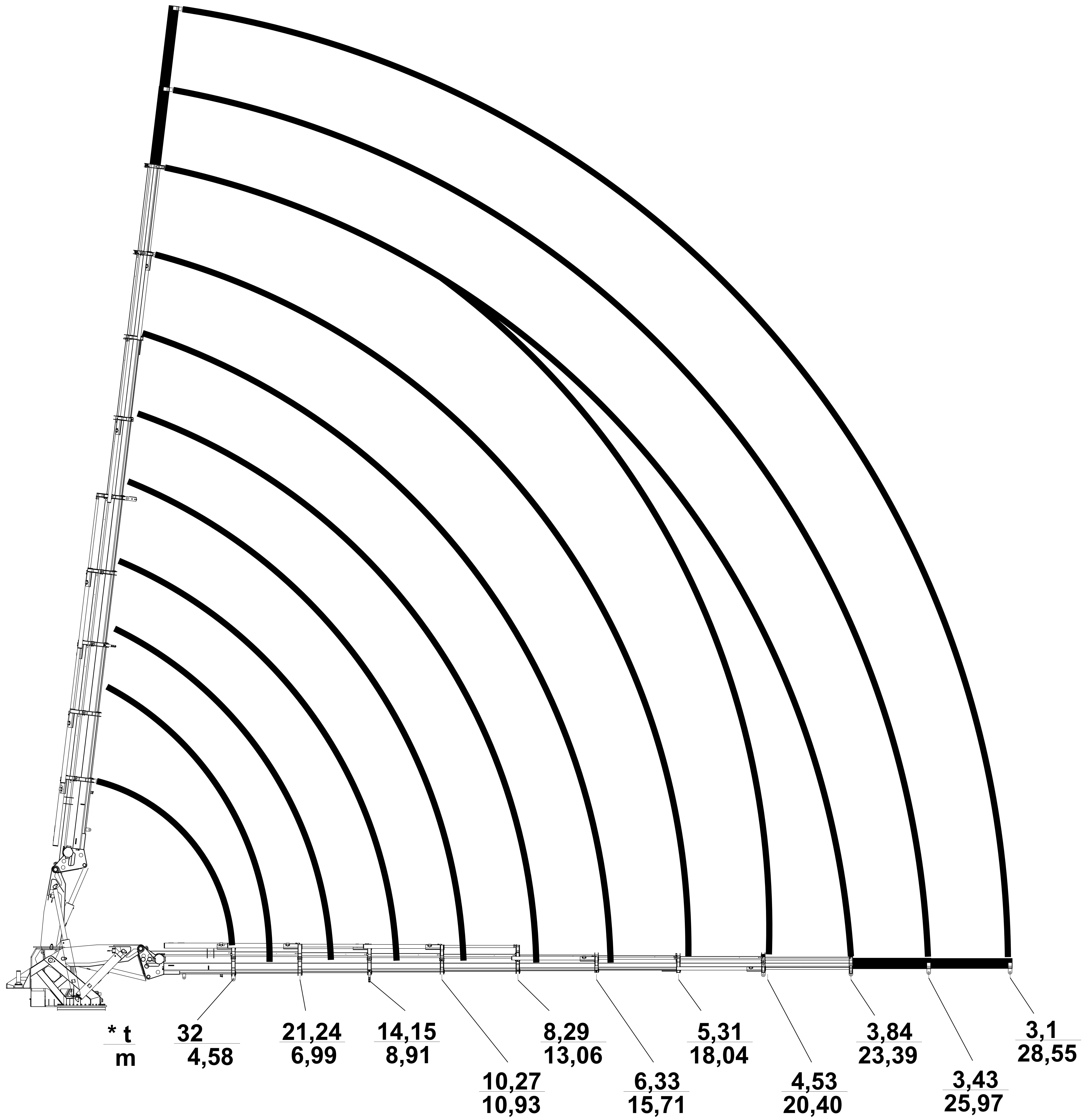


# HK 150.000 L8 + 2



- \* Main boom capacities are valid when the fly-jib is not attached!
- \* The deflection is not considered in outreach distances.
- \* Diagram values are valid when the angle of main boom is 20 degrees. (+/- 10 degrees)
- \* Lifting capacities may vary around +/- %10
- \* Subject to change without prior notice.